



SHIVALIK

Keeps The Wheel Moving  TM

Driving Automotive Excellence

Welcome Message

“ We are proud to partner with the nation’s growth, delivering consistent quality, precision and timely solutions to our customers. ”

We request and invite you to experience our wide range of castings. We are willing to establish a strong association and value added relationship with your esteemed organization.



Mr. Giriraj Singhania
CHAIRMAN & MANAGING DIRECTOR

Our Managing Director leads manufacturing, business development, & customer relations. He graduated with a commerce degree from Ravishankar University, Raipur, in July 1991 and has over 25 years of experience in precision engineering and automotive components.

Vision

To be a globally trusted partner for high-performance castings & machined components, delivering excellence through innovation, sustainability & world-class manufacturing.

Mission

**Deliver precision
engineered castings
& machined solutions
exceeding customer
expectations**

**Foster zero-defect
culture, continuous
improvement and
timely delivery**

**Promote sustainable
manufacturing
aligned with global
environmental
standards**

Core Values



Integrity



Commitment



Excellence



Professionalism

We believe in earning trust through **our actions and always strive for outstanding results for our customers and partners.**

Shivalik Group Management



Mr. Giriraj Singhania
CHAIRMAN & MANAGING DIRECTOR



Mr. Raghvendra Singhania
JOINT MANAGING DIRECTOR



Mr. Vinay Agrawal
WHOLE-TIME DIRECTOR

With the ***largest manufacturing footprint*** in the industry,
Shivalik sets the benchmark for
quality, scalability & precision in every
product we create.

At a Glance

01



About SHIVALIK

**Founded in 2007, headquartered
in Bhilai, Chhattisgarh, India**

Key Highlights

126,000 MT
ANNUAL CAPACITY

Foundries Capacity

600+
PRODUCTS

Agriculture, Automotive,
Railways, Pipe Fitting &
Off-Highway segment

1,500+
EMPLOYEES

Skilled, Experienced
Workforce

1 Million
PARTS / ANNUM

Machine Shop Capacity

45+
CUSTOMERS

Trusted by National &
International Clients

4 Foundries
1 Machining Unit
1 Fetting Unit
1 Solar Plant

Dedicated facilities
with sustainable energy

Industries Served

Diverse expertise. Unwavering precision. Trusted across sectors.



Agriculture

Durable, high-quality components supporting leading farm equipment makers.



Automotive

Serving leading Commercial Vehicle (CV), Heavy Commercial Vehicle (HCV) with precision castings and machined parts.



Railways

Trusted supplier of core castings and assemblies for rail infrastructure.



Waterworks & Pipe Fittings

Robust SG Iron valves and fittings for municipal and industrial water systems.



Off-Highway Equipment

High-strength castings for mining, construction and heavy engineering sectors.

Agriculture Segment

Components designed for tractors, harvesters & farm implements, focusing on durability & performance.



Key products:

Product range includes gearboxes, crankcases, transmission housings and clutch parts.

Partnerships with Mahindra, Escorts Kubota, TAFE and Sonalika among others.

Automotive Segment

High-quality castings & machined parts for commercial vehicles & trucks.



Key products:

Brake drums, wheel hubs, carriers, brackets, transmission housings, clutch housings, axle supports.

Trusted by OEMs such as Tata Motors, Ashok Leyland, Daimler and Volvo Eicher.

Railways Segment

Core castings and assemblies for rail infrastructure and rolling stock.



Key products:

Rib Base plate, Adaptors, Fitted Back Rings and End cap cover

Supplying Indian Railways, DMRC, Timken and NBC.

Waterworks & Pipe Fitting Segment

Durable SG Iron and ductile iron castings for valves, pipe fittings and municipal water systems.



Key products:

Reliable components to ensure leak-free, corrosion-resistant infrastructure.

Trusted by Star Pipes India and international waterworks suppliers.

Off-Highway Segment

Robust castings built for construction, mining and heavy engineering machinery.



Key products:

Product applications include differential cases, carriers and chassis components.

Ensures superior strength and reliability for tough terrains and heavy-duty operations.



Proud Clients

Shivalik takes pride in being a trusted partner to some of the world's most esteemed manufacturers and organizations.

Export Customers :



National Customers :



Global Approved Vendor For

Shivalik is a globally approved vendor for premier manufacturers across automotive and heavy equipment sectors:



DAIMLER
TRUCK



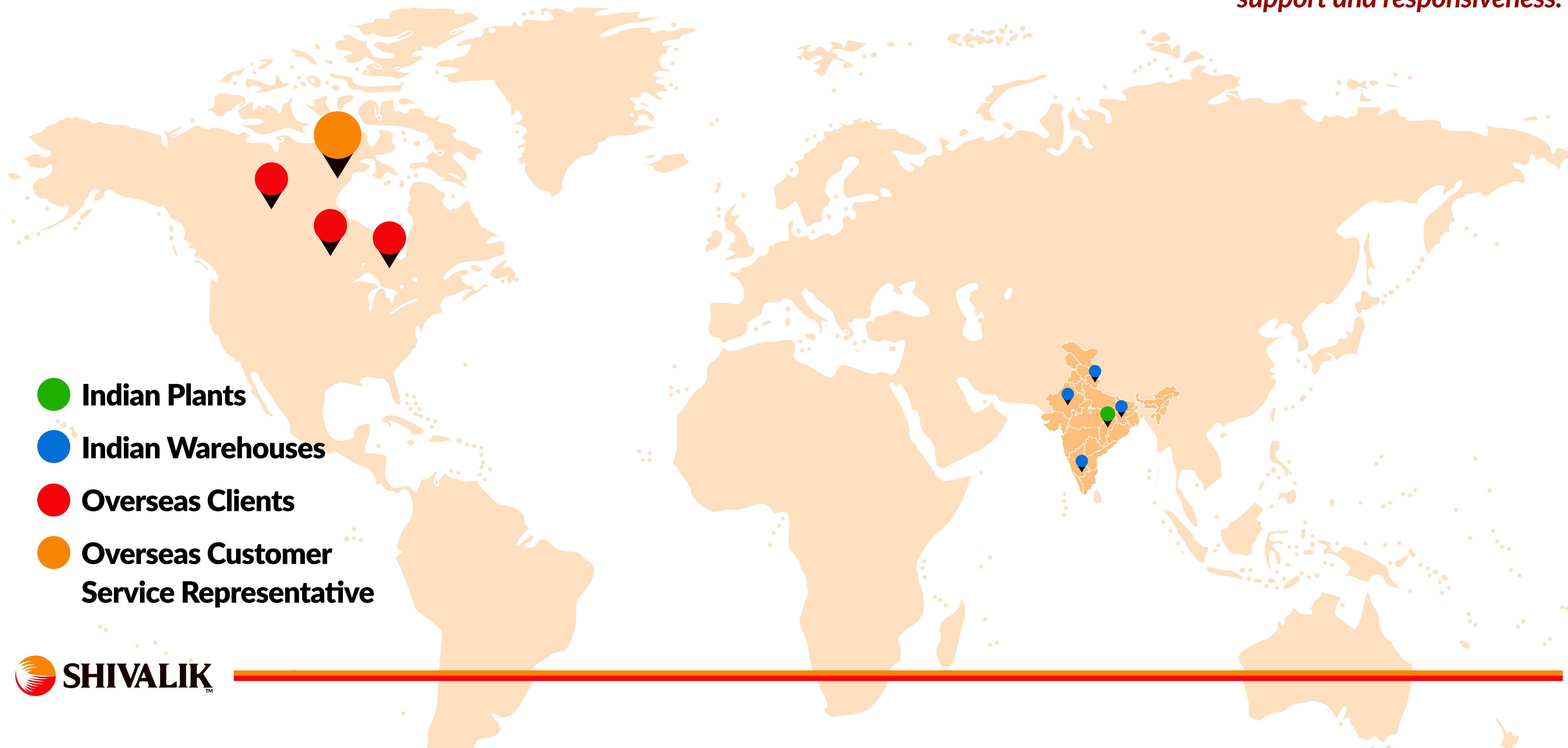
V O L V O





Overseas Clients & Global Reach

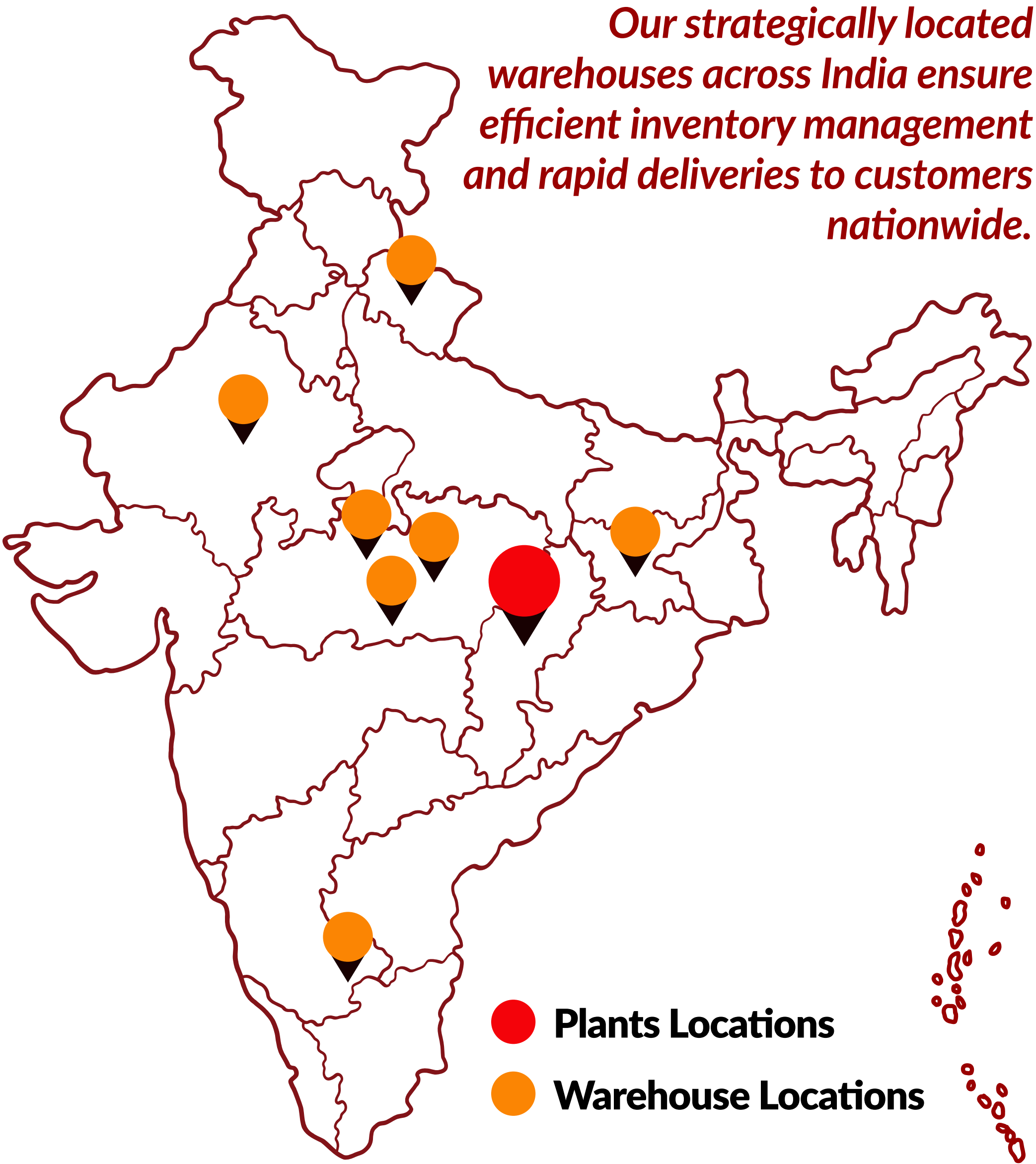
Shivalik proudly serves a diverse set of overseas clients with dedicated customer service representatives to ensure seamless support and responsiveness.



Warehouse Locations [INDIA]

LOCATION	STATE	PURPOSE
Pant Nagar	Uttarakhand	Northern distribution for automotive clients
Pithampur	Madhya Pradesh	Central logistics hub serving western and northern OEMs
Bhopal	Madhya Pradesh	Support and supply to central India network
Dewas	Madhya Pradesh	Quick dispatch for regional partners
Alwar	Rajasthan	Northern logistics & client support center
Jamshedpur	Jharkhand	Eastern India supply hub for heavy vehicle OEMs
Doddaballapur	Karnataka	Southern distribution point for off-highway and agri-equipment clients

Our strategically located warehouses across India ensure efficient inventory management and rapid deliveries to customers nationwide.



Achievements & Recognition

Shivalik Engineering Industries Limited is praised for quality, timely delivery and collaboration.



Escorts Kubota

Best Cost Efficiency Award, May 2024



Ashok Leyland

Superlative Performance in Agility, July 2024



VECV

Recognized in October 2024 for outstanding partnership and operational reliability

Achievements & Recognition

Shivalik Engineering Industries Limited is praised for quality, timely delivery and collaboration.



Capacities & Operations

02



Units & Facilities

Current

UNIT 1

Location :
Plot – 8, Heavy
Industrial Area,
Bhilai

Specialty :
Grey Iron Foundry,
Machine Shop

Capacity (MT) :
**2,750 MT Per
Month**
Estd. in : 2014

UNIT 2

Location :
Plot – 14, Heavy
Industrial Area,
Bhilai

Specialty :
SG Iron Foundry

Capacity (MT) :
**2,750 MT Per
Month**
Estd. in : 2019

UNIT 3

Location :
Plot – 15, Heavy
Industrial Area,
Bhilai

Specialty :
Machine Shop &
Specialized Lines

Estd. in : 2024

UNIT 4

Location :
Belsonda,
Mahasamunda

Specialty :
ARPA Line,
CNC Machining,
Upcoming HPM Line

Capacity (MT) :
**2,500 MT Per
Month**
Estd. in : 2007

Upcoming

Fettling UNIT 5

Location :
Plot – 17, Heavy
Industrial Area,
Bhilai

Specialty :
Automated
Fettling

Capacity (MT) :
**5,000 MT Per
Month**
Estd. by Dec 2025

Sinto UNIT

Location :
SINTO-
Horizontal

Specialty :
Flaskless line

Capacity (MT) :
**2500 MT Per
Month**
Estd. by May 2026

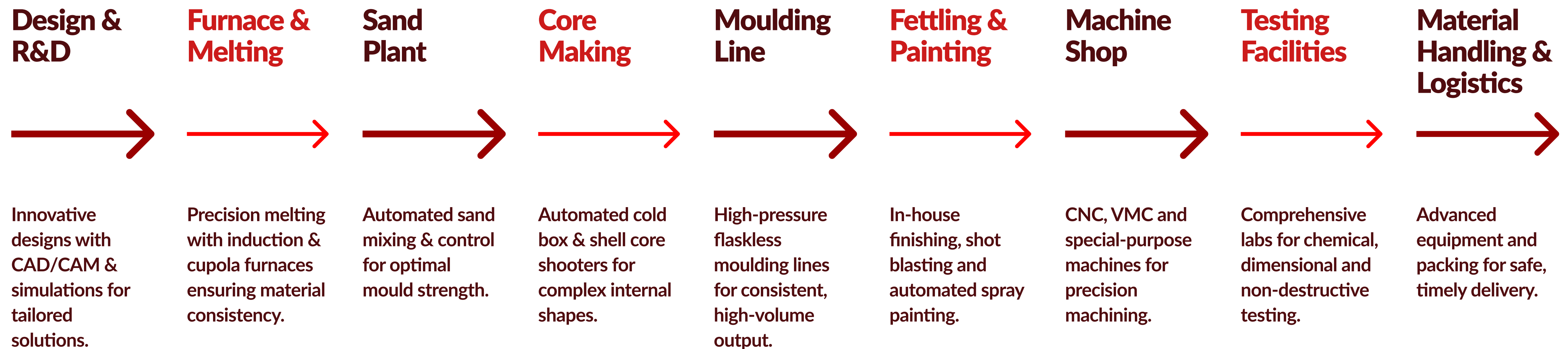
Solar UNIT

Location :
Katalbod,
Bemetara

Specialty :
Solar Power

Capacity (MT) :
55 MW
Estd. by Mar 2026

Technical Details Roadmap



Streamlined End-to-End Manufacturing: From Design to Delivery



Design and R&D

Innovative product design & process engineering drive quality, efficiency and tailored casting solutions. Equipped with CAD/CAM and simulation tools supporting customer-driven customization.



Furnace

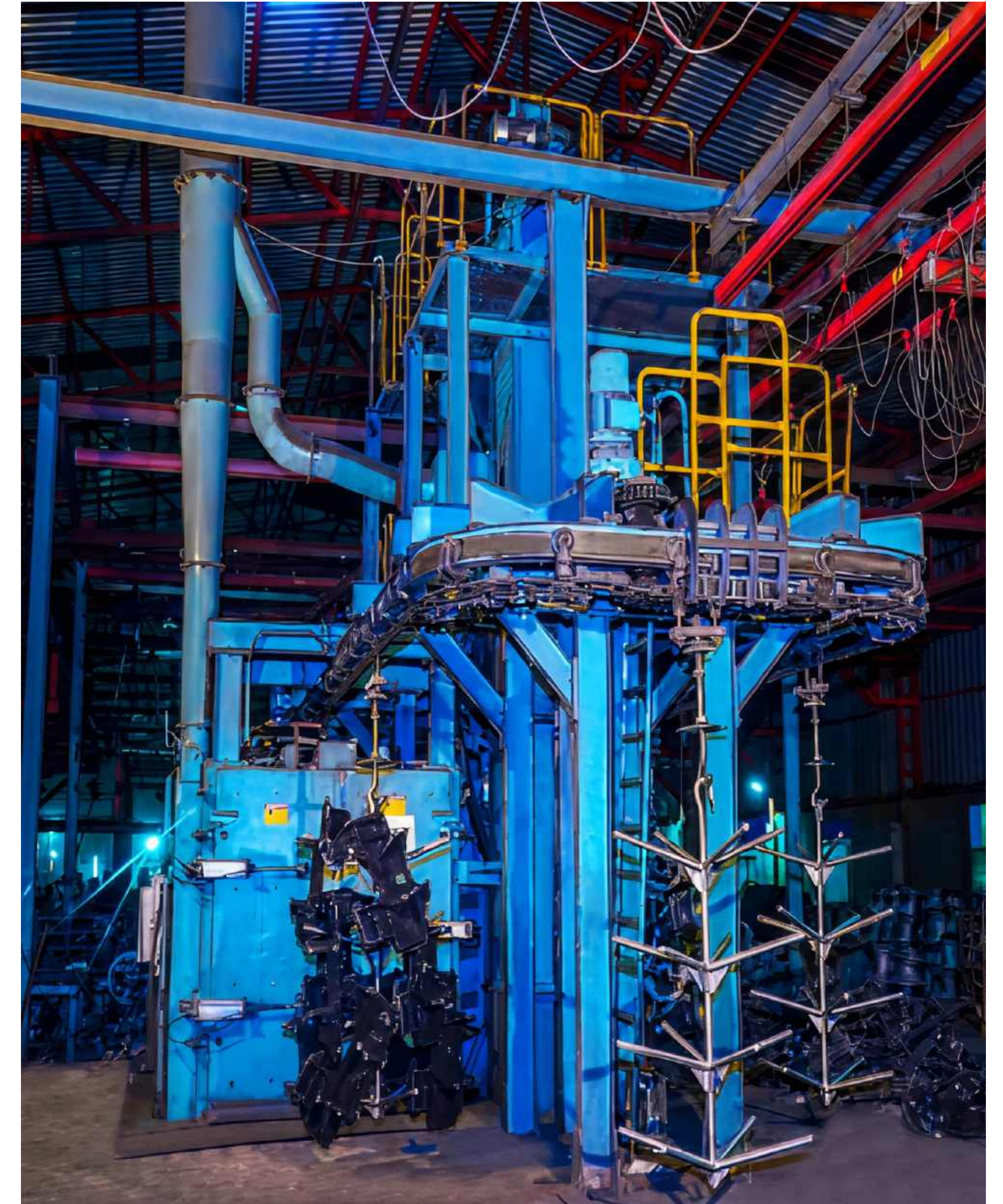
- Advanced induction and cupola furnaces for precise SG iron/alloy melting and energy efficiency.
- Vibro charger enables smooth, automated scrap charging.
- Energy master system optimizes melting cycles for reduced power usage and consistent quality.

	SEIL- Unit 1	SEIL- Unit 2	SEIL- Unit 4
Induction Furnace Type	Tri-track medium frequency.	Quad-track medium frequency.	Tri-track/Mono-track medium frequency.
Nos of Furnace	3	4	5
Crucible capacity	3 MT each	2 MT each	1 MT each



Sand Plant

- DISA TM285 horizontal intensive mixer, 3200 Kg batch capacity.
- 85 Tons/hour, PLC-integrated sand plant with SCADA control.
- Online computerized DISA Sand Multi Controller (SMC) ensures precise sand properties and batch quality.





Core Shop

- Automated core making ensures precise, complex internal shapes with tight tolerances.
- Fully automatic cold box core shooters:
 - 25 kg capacity, 600×450 mm vertical parting
 - 100 kg capacity, 900×750 mm vertical parting
- Shell core shooter with 600×450 mm mounting plate.

	SEIL- Unit 1	SEIL- Unit 2	SEIL- Unit 4
Core Box Machine Type	Cold Box, Shell Core, No Bake	Cold Box, Shell Core, No Bake	Cold Box
Number of Machines	7 Cold box core shooter, 1 Shell Box core Shooter	5 Cold Box core shooter, 1 Shell Box core shooter	1 Nos cold Box Core Shooter
Core Making Capacity	1200 MT	800 MT	500 MT



Moulding Line

- PLC-operated DISA Flex 70 Flask Type Horizontal High Pressure Moulding line — delivers 84 moulds per hour.
- Automatic Mould Handling Conveyor (AMC) — 75 meters, enabling continuous, streamlined production flow.
- Automated pouring line spans 24 meters for consistent, efficient metal casting.
- Integrated automatic core setter for precision and speed in mould assembly.

	SEIL- Unit 1	SEIL- Unit 2	SEIL- Unit 4
Type	DISA Flex 70 HS HPML	DISA Flex 70 HS HPML	ARPA- Manual
Flask Mold Size	1000mm x 700mm x 325/325mm	1000mm x 700mm x 325/325mm	700mm × 800mm × 650/700mm



Fettling & Painting

- Dedicated fettling shop with full in-house finishing, 5,000 MT/month capacity.
- Fully automatic continuous hanger-type shot blasting machines, 1,000 Kg capacity each.
- Swing frame grinders ensuring smooth surface finish and precision.
- Conveyorized spray painting system with paint booth for uniform coating and corrosion protection.





Machine Shop

Additional investment on machining facilities can be done based on customer requirements.

Machine Type	Specification / Size	Total
HMC	500 X 500	7
HMC	630 X 800	5
VMC	800 X 430	38
VMC	1100 X 580	10
VTL	Dia 400 to 600	62
SPMs	Special Purpose	34
Leak Test	Special Purpose	6
Washing line	400 X 400	2
Balancing machine	For Drum balancing	8
ROBOT (6ARM)	For Component loading & unloading	1
CMM	Coordinate measuring machine	2
Lathe	For Drum / Hub Turning	35



Testing Facilities

- Fully integrated sand and metal labs ensure comprehensive quality control.
- Equipped with spectrometer for precise composition analysis.
- Leak testing detects casting imperfections and ensures integrity.
- Three Coordinate Measuring Machines (CMMs) for accurate dimensional inspection.
- Ultrasonic Testing (UT meter) identifies internal flaws nondestructively.
- 3D scanner, profile projector and contour tracer optimize geometry and surface profile assessments.

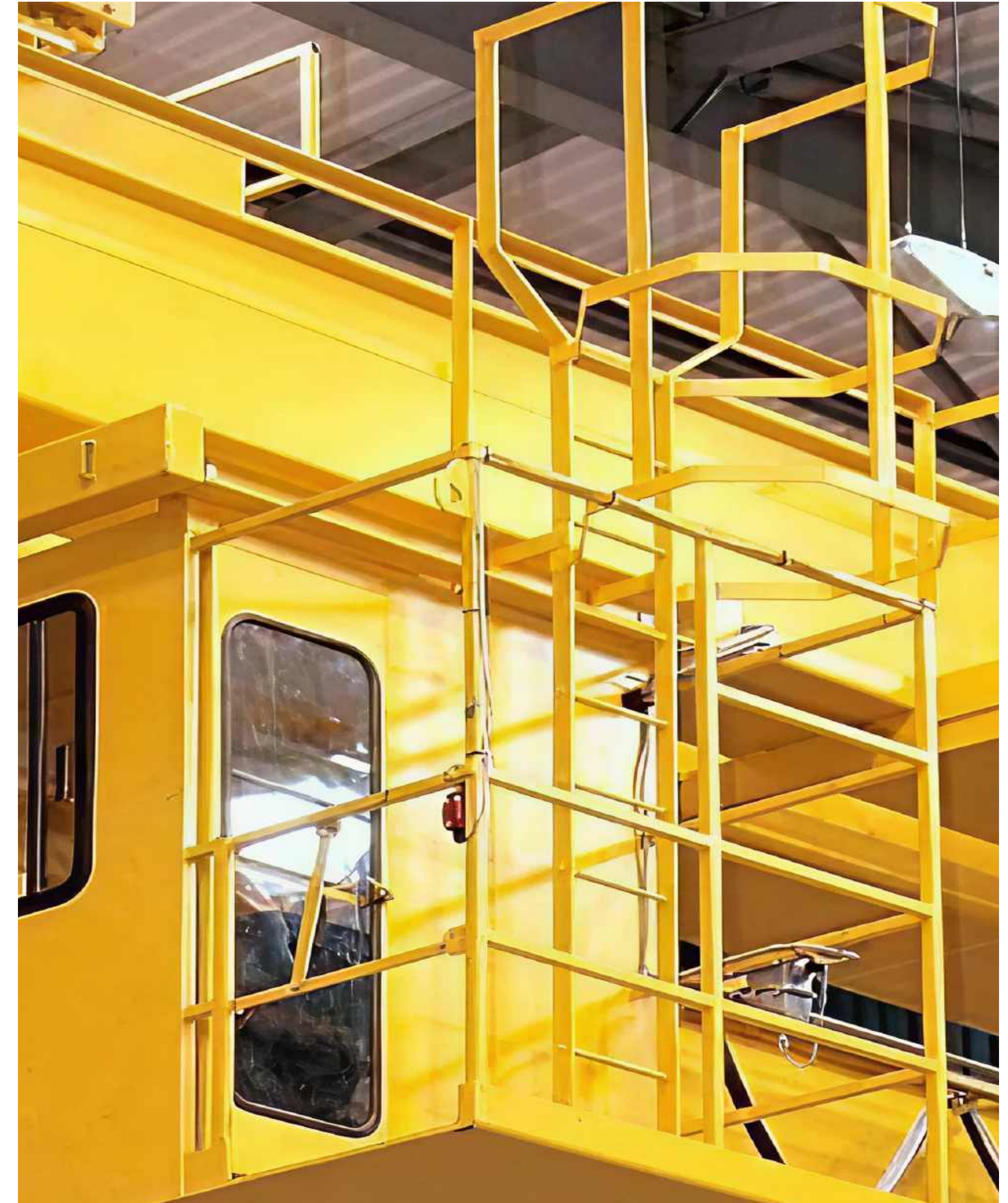
Robust testing facilities guarantee defect-free castings with consistent quality.



Material Handling & Logistics

- 3-ton forklifts for versatile on-site movement.
- 7.5/5-ton EOT cranes with magnets for raw material and liquid metal handling.
- 0.5-ton XY rail crane system in fettling area for precise handling.
- JCB earth mover for waste disposal.
- Tractors with trolleys for in-house transport.
- 360-meter Vinar overhead cooling conveyor linking foundry to fettling with 250 hangers.
- Strict packing standards aligned to customer specs to prevent damage and rejections.
- Special shrink-wrap packing machines for quality, cost-effective packaging.
- Dot matrix QR code and laser marking machines for traceability and identification.

Integrated logistics and advanced equipment ensure efficient, safe, & quality-assured delivery.

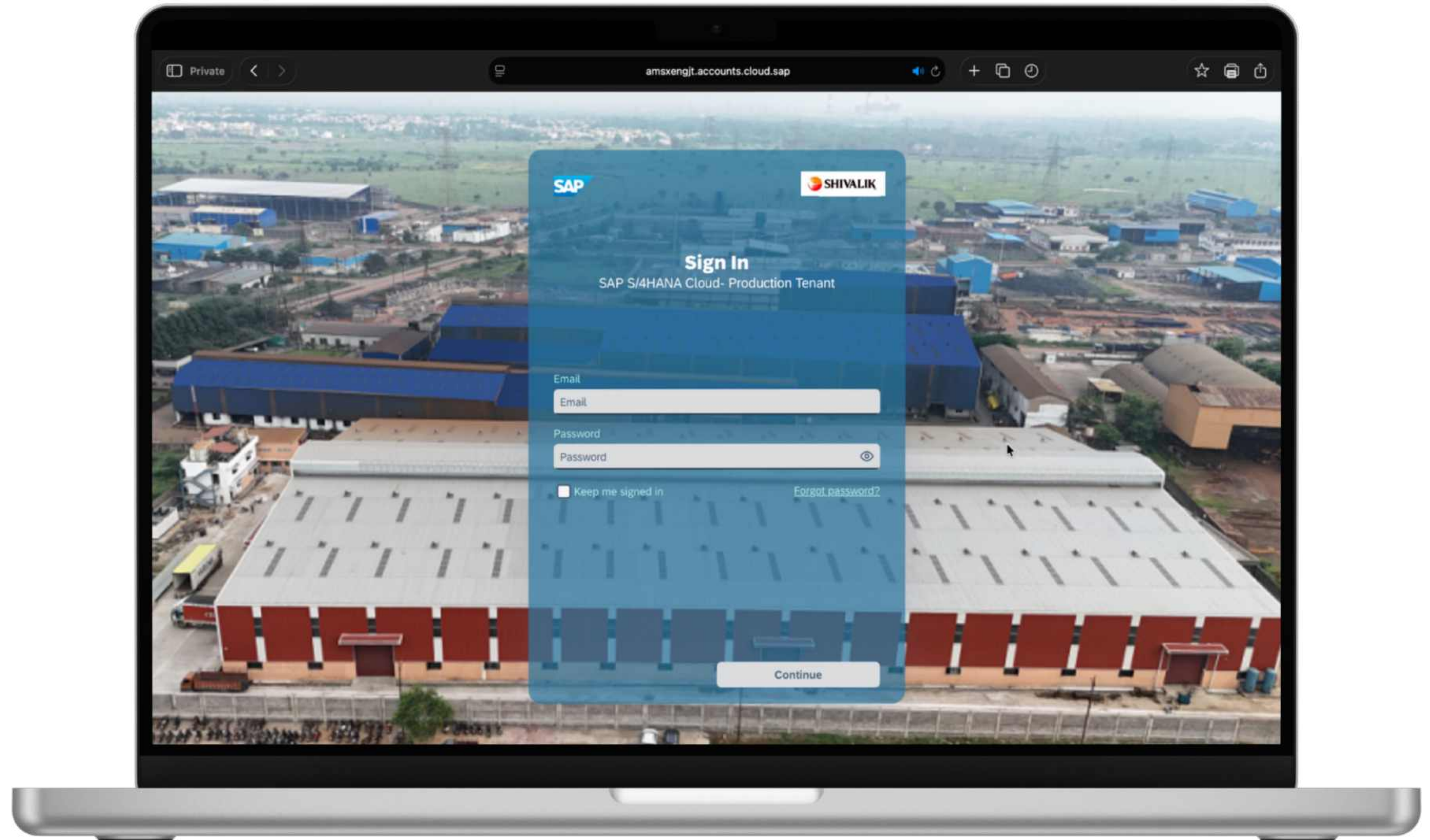


 Transformation Technologies

***Seamless Integration of
Advanced Technologies for
Precision Manufacturing***

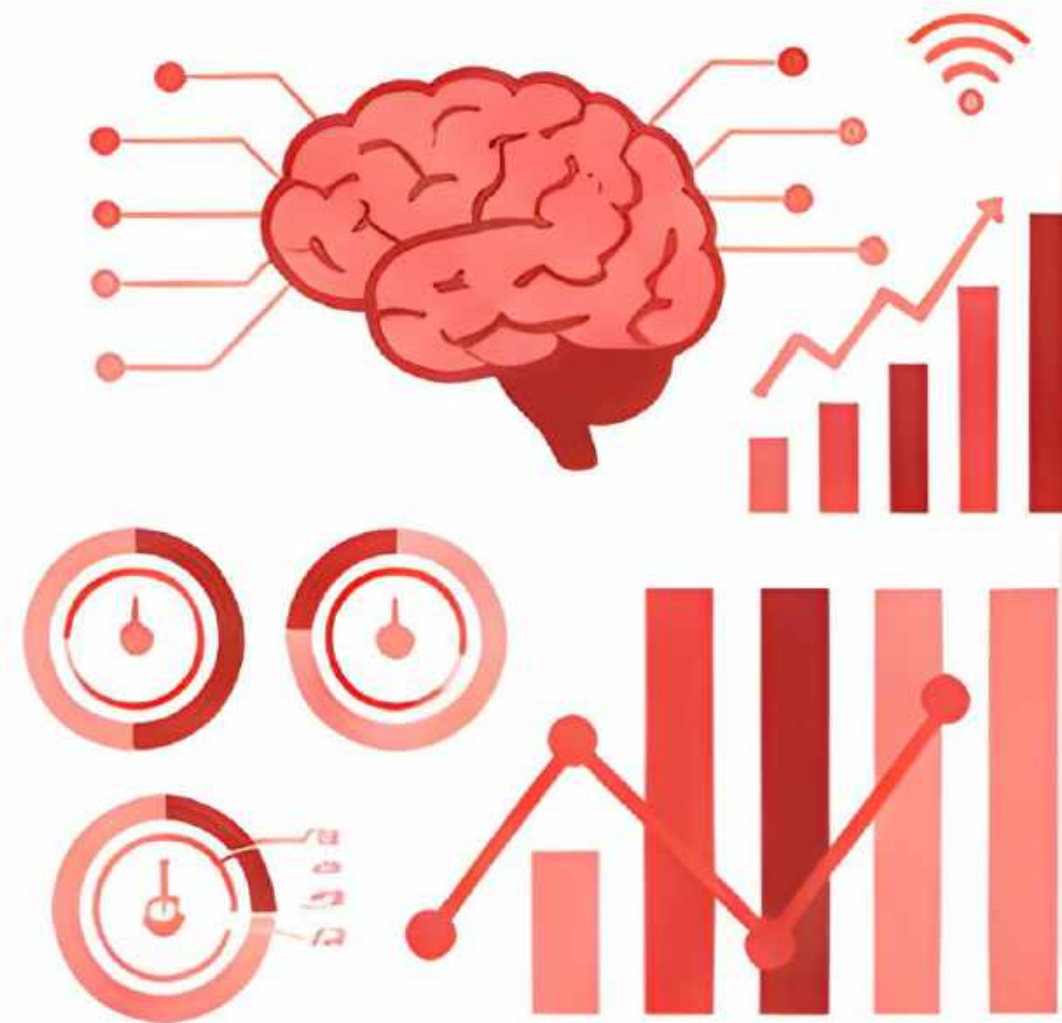
Streamlining Operations with SAP - ERP

Integrated enterprise resource planning system **optimizing procurement, inventory, production planning, delivery, billing and accounts** for enhanced efficiency and visibility.



Smart Manufacturing Revolution

AI



DATA ANALYTICS

Data-driven insights & predictive analytics to improve quality and reduce downtime.

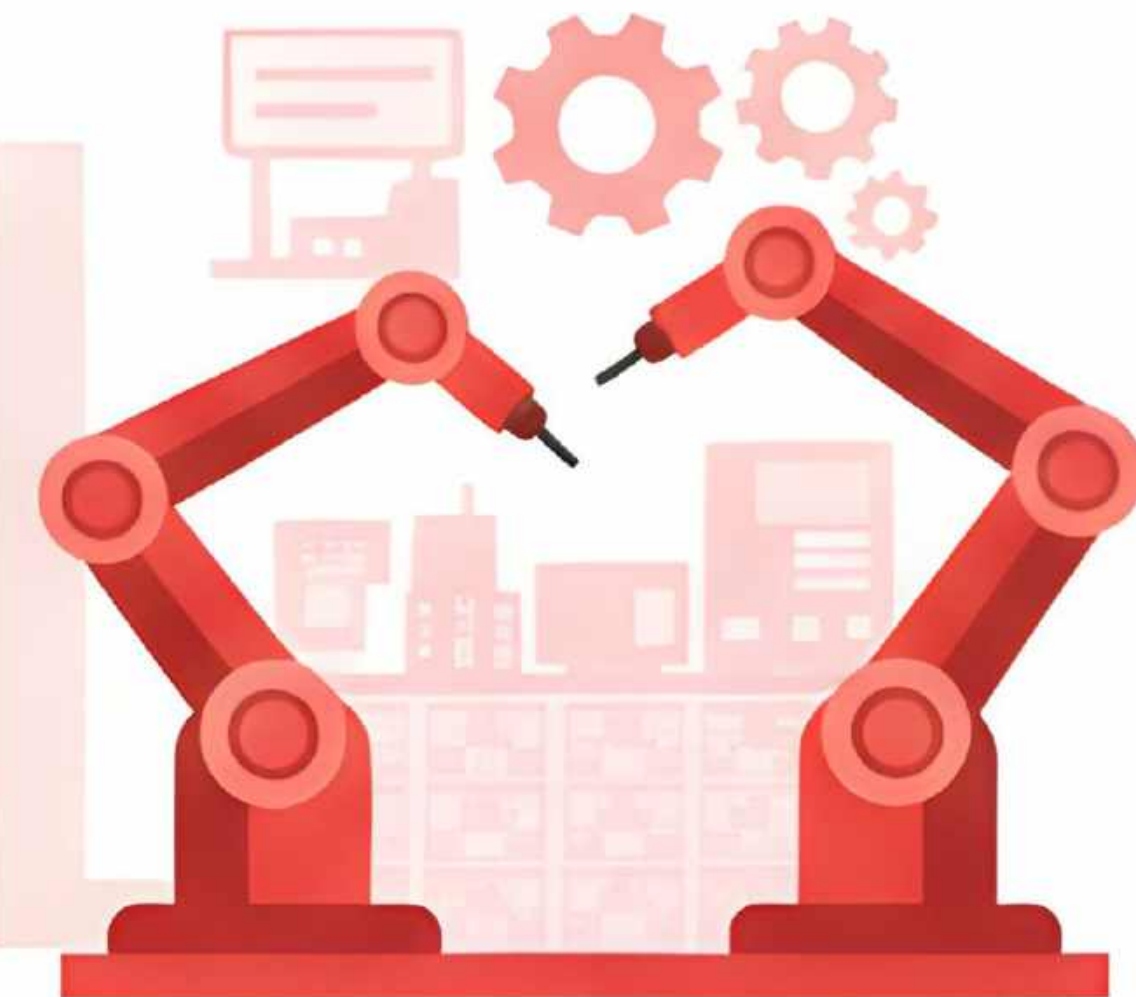
IoT



CONNECTED SENSORS + SIGNALS

Real-time sensor data connectivity enabling proactive maintenance & inventory management.

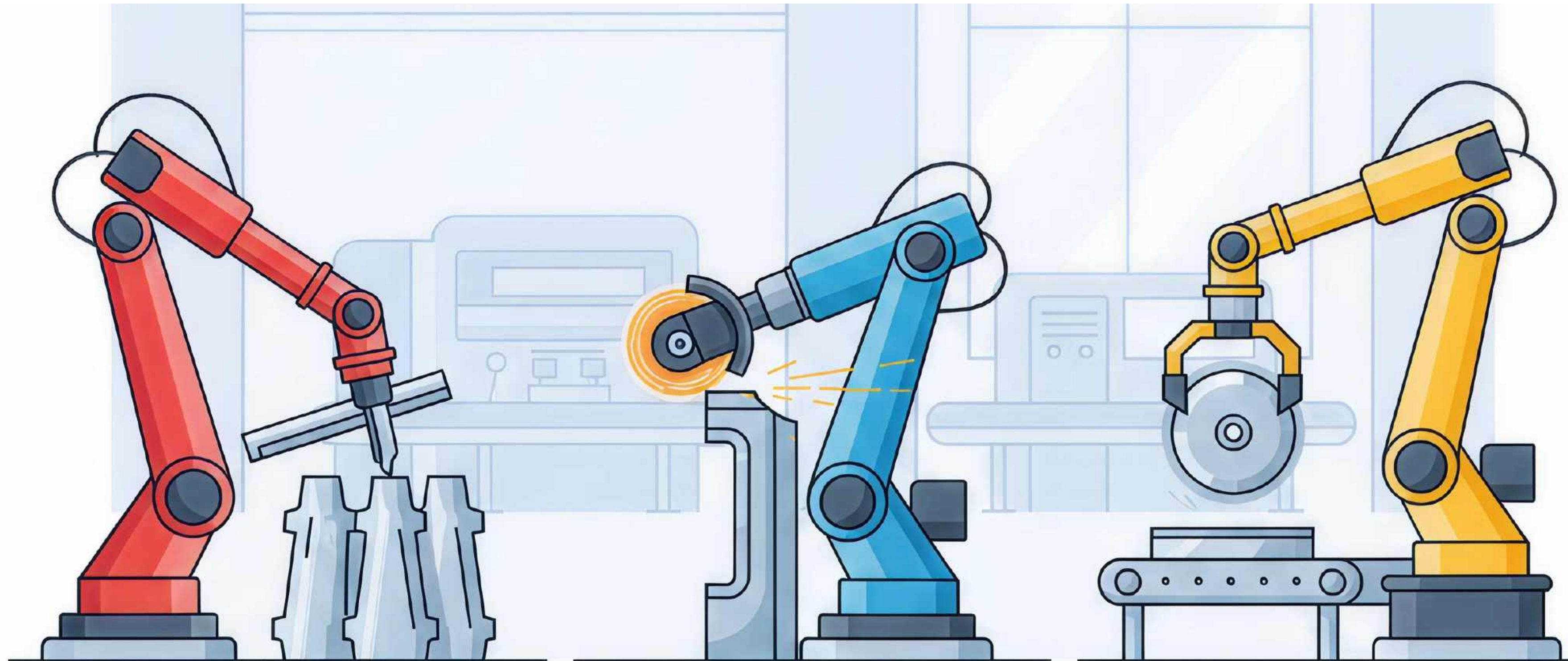
Robotics



PRECISION ROBOTIC ARMS

Precision robotics & automation for repeatable, high-quality casting processes.

Automation



Degating

Automated removal of casting gates for faster cycle times.

Fettling

Robotic fettling for consistent finishing quality and safety.

Loading

Automated loading systems reducing manual handling and increasing throughput.

Quality Commitment



**IATF 16949:2016
Certified**

Automotive Quality
Management System



**ISO 9001:2015
Certified**

Quality Management
System



**ISO 14001:2015
Certified**

Environmental
Management



**ISO 45001:2018
Certified**

Occupational Health
& Safety Management



**VDA 6.3
Certification**

Automotive
Process Audits



**ISO 27001:2022
(In Process)**

Information Security
Management



**Zero-Defect
Mindset**

Empowering all employees
to uphold flawless quality



**On-Time
Delivery**

Achieving 99%+ on-time
delivery performance
consistently

Certifications

- We are VDA 6.3 Certified



Health & Safety

- ISO 45001:2018 Certified & fully legally compliant
- 0 Major Accidents in the past 3 years
- 100% PPE Usage across all units
- 3,000+ Annual Training Hours on safety & skills
- Quarterly Fire & Evacuation Drills at every facility
- Annual Health Check-ups for all employees
- Strong Hazard Identification & Risk Control System
- Safety-First Culture with active worker participation



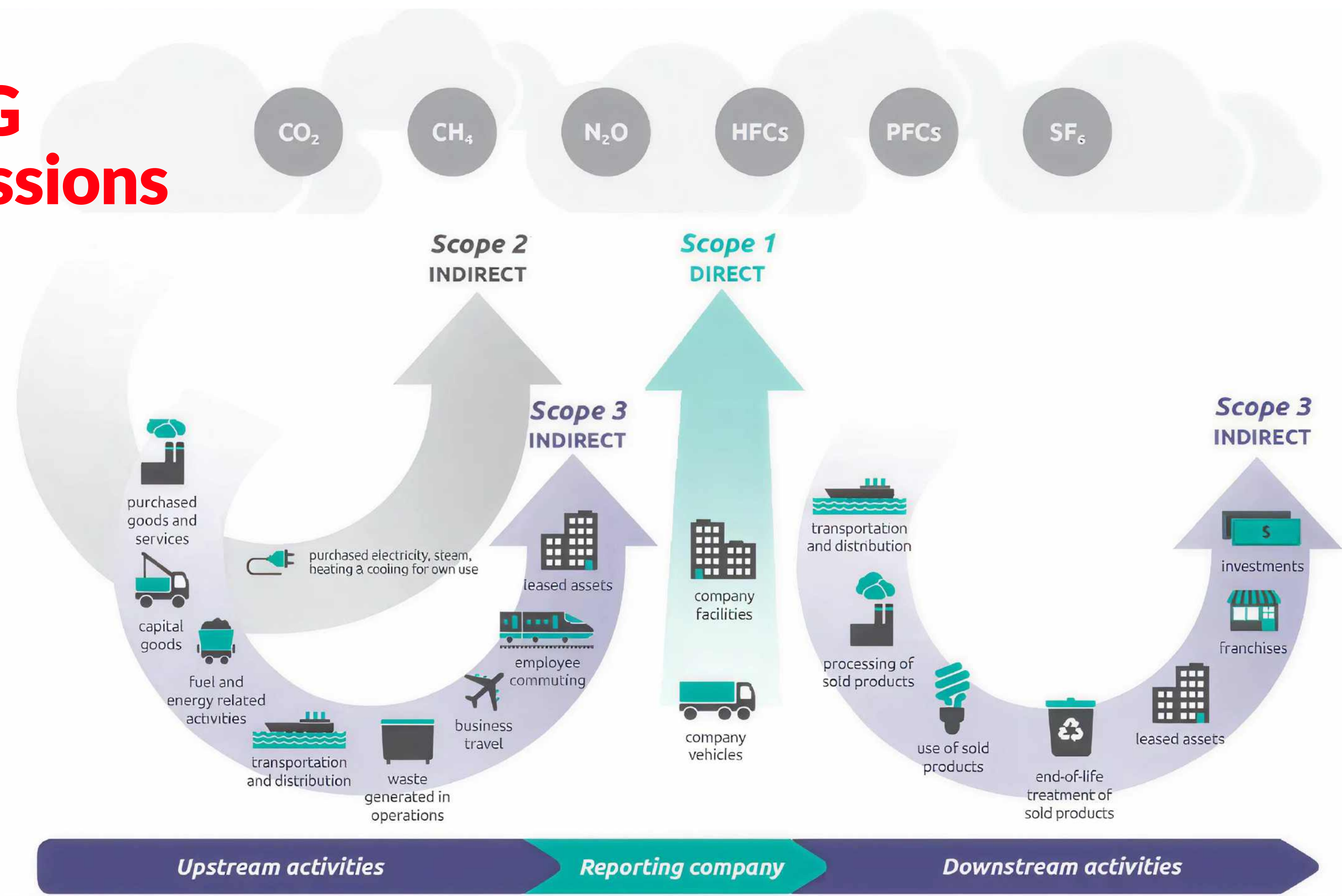
Environmental, Social & Governance

03



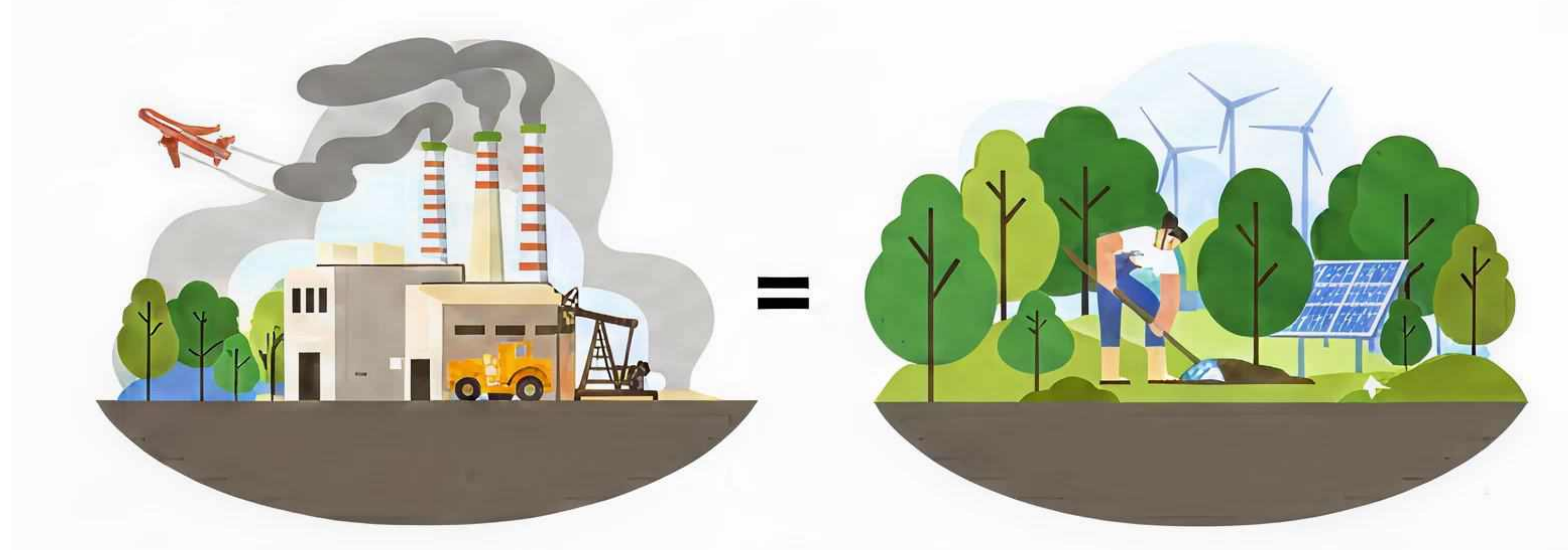


GHG Emissions



Road to Carbon Neutrality

- We kept Carbon intensity at **1.44 tCO₂e/lmt** and targeting to reduce by **50% till 2026.**
- Aim to reduce greenhouse gas emissions by **50% by 2026.**
- Setting up of **55 MW solar plant by 2026.**
- Target: **50% GHG emission reduction by 2026** (from 2023 baseline).
- By **2027: Targeting 60% green energy and carbon neutrality aligned with the Paris Agreement.**
- Energy recovery via **efficient induction furnaces.**



Emissions & Air Quality Compliance

- FY 2025: GHG emissions per ton of LMT cast are maintained below the 1.52 target, reflecting progress in carbon footprint reduction.
- Air Quality Index assays consistently meet regulatory thresholds; zero violation recorded in last 3 years.
- Invested in high-efficiency fume extraction units reducing particulate emissions by 70%.
- Full compliance ensured through real-time emission monitoring systems.





Verified for Transparency

*Verified by Sentra.world – every Shivalik number
stands for trust, accuracy and global accountability.*



Water Conservation & Reuse

- Rainwater harvesting system with **2.84 million KL annual capacity.**
- Closed-loop cooling system reduces **fresh water demand by 40%.**
- Water reuse initiatives treat & recycle **over 80% of process wastewater annually.**
- These measures conserve roughly **6 million litres of municipal water each year.**



Waste Recycling & Circular Economy

- Close to near 100% recycling rates for sand & metal waste.
- Sand waste recycling rate: 98% (FY 2024).
- Metal waste recycling rate: 99%.
- Adopted powder-based core wash system, eliminating over 500 kg of plastic waste per annum.
- Circular economy through returnable/reusable packaging, reduces over 10,000 kg of single-use packaging yearly.
- Annual targets to further minimize hazardous waste.



Sustainability

- Minimize environmental impact through **proactive waste management and emission control**
- 55 MW solar power project spread across **125 acres**, commencing by **March 2026** - reaffirming commitment to **sustainable energy**
- Targeting **80% renewable energy** utilization
- Implement resource conservation: metal waste reuse, **sand recycling and eco-friendly packaging**
- Maintain rigorous **monitoring of greenhouse gas (GHG)** emissions across operations



Human Development

Generating Local Employment :

Creating thousands of jobs within the community boosts economic growth and stability.

Empowering Women:

Focused initiatives to include women in skilled and leadership roles promote equality and diversity.

Skill-Based Training and Development :

Continuous training programs upskill workers, enhancing productivity and career growth.

Community Welfare :

Investments in health, education and infrastructure improve living standards beyond the workplace.





Let's Partner

Shivalik Engineering Industries Limited welcomes trusted partners, clients and investors to collaborate in shaping the next era of Engineering Excellence.

Thank You.



SCAN TO KNOW MORE

 **+91 8370002018**

 **info@shivalikengineering.com**